

High Frequency iDMS Micro-Convex (i8MCX1)



Multi-Frequency Slim Face Convex (i8C1)*





Single Crystal iDMS Convex (i10CX1)



Single Crystal Convex (10C1)



Multi-Frequency Micro-Convex (8MC1)



33 MHz Ultra-High Frequency iDMS Linear (i33LX9)



24 MHz Ultra-High Frequency iDMS Linear (i24LX8)



Multi-Frequency Ultra-wideband iDMS Linear (i18LX5)



Linear iDMS (i11LX3)

17 MHz Hockey Stick (17LH7)*



22 MHz Ultra-High Frequency Hockey Stick (i22LH8)



Single Crystal Wideband Sector (6S1)



Multi-Frequency General Sector 2D Array (i6SVX2)



Cardiac Multi-Frequency 2D Array iDMS Transducer (i6SVX1)*



Multi-Frequency Pediatric Cardiac 2D Array iDMS (i7SVX2)



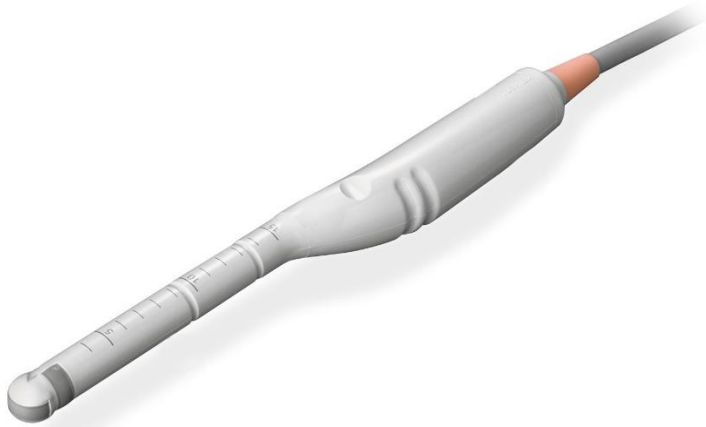
Cardiac Multi-Frequency iDMS (12S4)



Multi-Frequency Endocavitary (11C3)



Multi-Frequency Endorectal (10C)



Small Footprint Mechanical 4D (9CV2)



4D-TEE / Volume Matrix (i6SVX2)

Multi-Frequency Slim Face Convex (8C1)**

Also available on Aplio i-series / Prism Edition (as 8C1)



Single Crystal Convex (10C1)



Multi-Frequency Micro-Convex (8MC1)*Features:



17 MHz Hockey Stick (17LH7)*



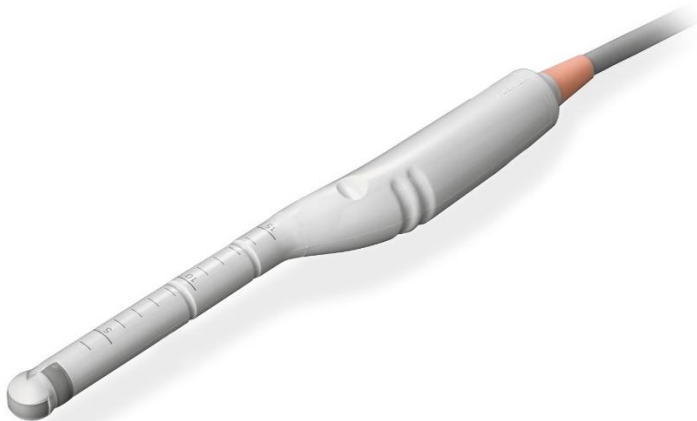
Single Crystal Wideband Sector (6S1)*



Multi-Frequency Endocavitary (11C3)*



Multi-Frequency Endorectal (10C5)*



Small Footprint Mechanical 4D (9CV2)*

